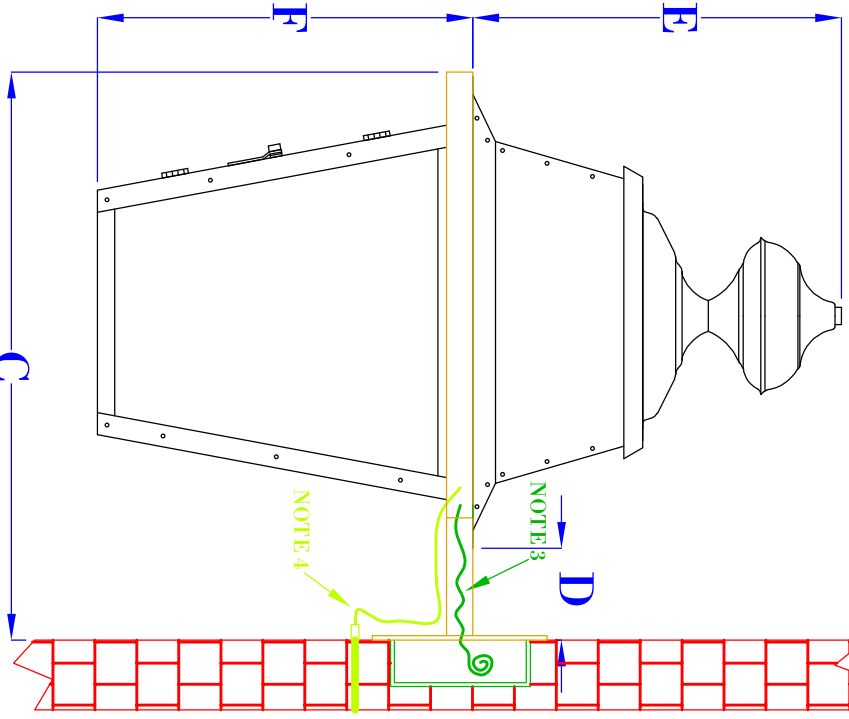
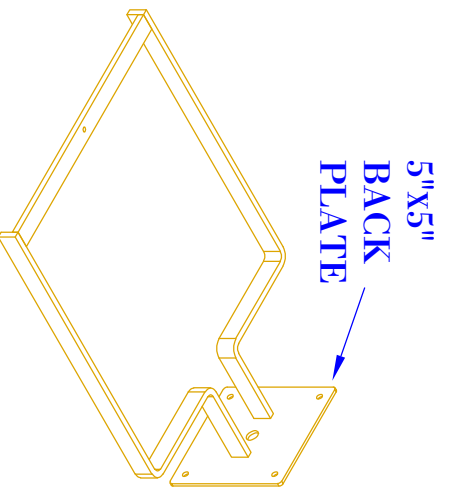


FRONT VIEW
(NTS)



SIDE VIEW
(NTS)



ISOMETRIC VIEW
(NTS-BRACKET ONLY)

- NOTES:
1. MOUNTING HARDWARE SUPPLIED BY OTHERS
 2. FIXTURES ARE HANDCRAFTED. DIMENSIONS MAY VARY PLUS OR MINUS $\frac{1}{4}$ "
 3. ELECTRIC LIGHTS SUPPLIED WITH 18/2 WIRE WITH GROUND
 4. GAS LIGHTS SUPPLIED WITH $\frac{3}{16}$ " COPPER GAS LINE AND $\frac{3}{8}$ " x $\frac{1}{4}$ " GAS LINE ADAPTOR

BEVOLO GAS & ELECTRIC LIGHTS

LIGHT: MARTINIQUE

BRACKET: ORIGINAL BRACKET MOUNT

SIZE:	19"
A:	21 $\frac{1}{4}$ "
B:	13 $\frac{1}{2}$ "
C:	16"
D:	2 $\frac{3}{8}$ "
E:	10 $\frac{1}{2}$ "
F:	10 $\frac{3}{4}$ "

DATE: 5-14-25
APP. BY: JJG
REVISION: 3

DRW BY: JJG
PROPERTY OF BEVOLO GAS AND ELECTRIC LIGHTS
COPYRIGHT 2025, BEVOLO GAS & ELECTRIC LIGHTS. THIS DRAWING AND ANY DESIGN OR DATA CONTAINED THEREIN ARE CONSIDERED NEITHER THE DRAWING NOR ITS CONTENT MAY BE COPIED, REPRODUCED, OR EDITED TO A LIKENESS WITHOUT THE WRITTEN CONSENT OF BEVOLO GAS AND ELECTRIC LIGHTS.