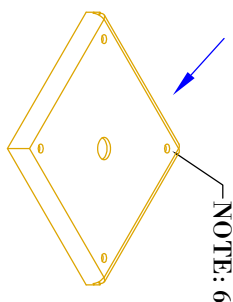
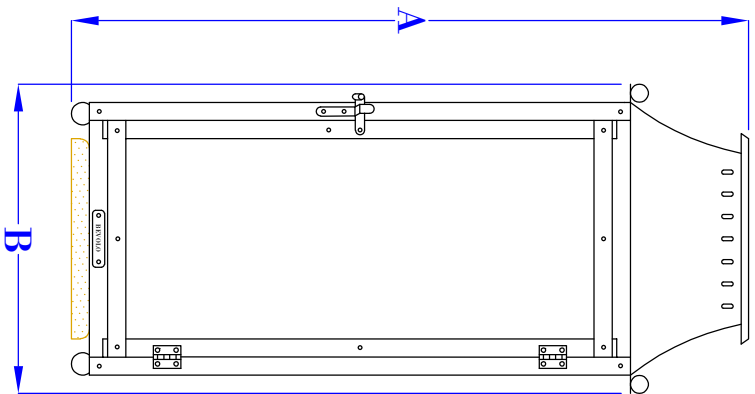


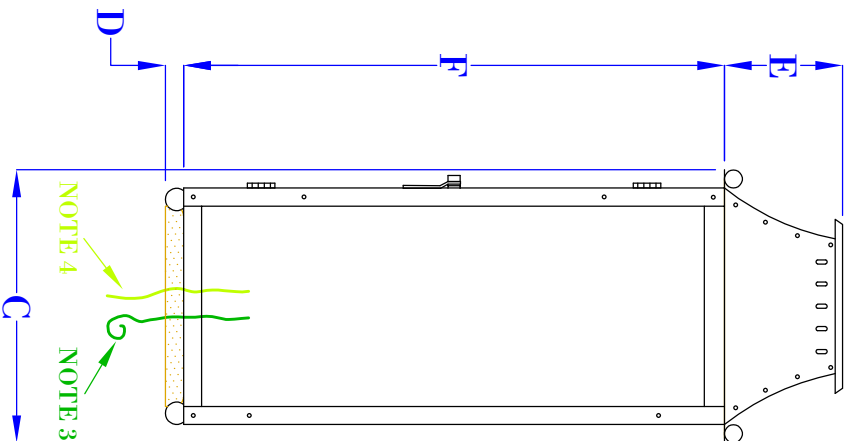
**5-1/2" X 5-1/2"
MOUNTING
PLATE**



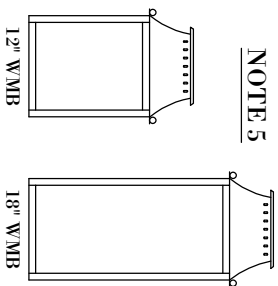
**ISOMETRIC VIEW
(NTS - BRACKET ONLY)**



**FRONT VIEW
(18" VERSION SHOWN)**



**SIDE VIEW
(18" VERSION SHOWN)**



NOTE 5

- NOTES:**
1. MOUNTING HARDWARE SUPPLIED BY OTHERS
 2. FIXTURES ARE HANDCRAFTED. DIMENSIONS MAY VARY PLUS OR MINUS 1/4"
 3. ELECTRIC LIGHTS SUPPLIED WITH 18/2 WIRE WITH GROUND
 4. GAS LIGHTS SUPPLIED WITH 3/16" COPPER GAS LINE AND 3/16" X 1/4" GAS LINE ADAPTOR
 5. PROPORTIONS FOR EACH SIZE CHANGE. 18" IS REPRESENTED ABOVE, THUMBNAILS TO THE RIGHT SHOW ALL FOR COMPARISON
 6. FIXTURE IS SECURED TO COLUMN BY INSTALLING MOUNTING HARDWARE FROM INSIDE OF LIGHT, THROUGH BASE OF FIXTURE AND CORRESPONDING HOLES IN BRACKET
 7. 12" SIZE NOT SOLD IN GAS

BEVOLO GAS & ELECTRIC LIGHTS

LIGHT: WILLIAMSBURG 12", 18"

BRACKET: LOW PROFILE COLUMN MOUNT

SIZE:	12"	18"
A:	12 5/8"	18 5/8"
B:	8 3/4"	8 3/4"
C:	9 1/2"	9 1/2"
D:	1 1/2"	1 1/2"
E:	3 1/4"	3 1/4"
F:	8 7/8"	14 7/8"

DATE:	DRW BY:	JJG
2-2-22	APP. BY:	JJG
REVISION:		2

COPYRIGHT 2020, BEVOLO GAS & ELECTRIC LIGHTS. DRAWINGS & DESIGNS ARE OWNED BY BEVOLO AND REMAIN THE SOLE AND EXCLUSIVE PROPERTY OF BEVOLO GAS & ELECTRIC LIGHTS. DRAWINGS AND DESIGNS SHALL NOT BE DUPLICATED IN WHOLE OR PART.