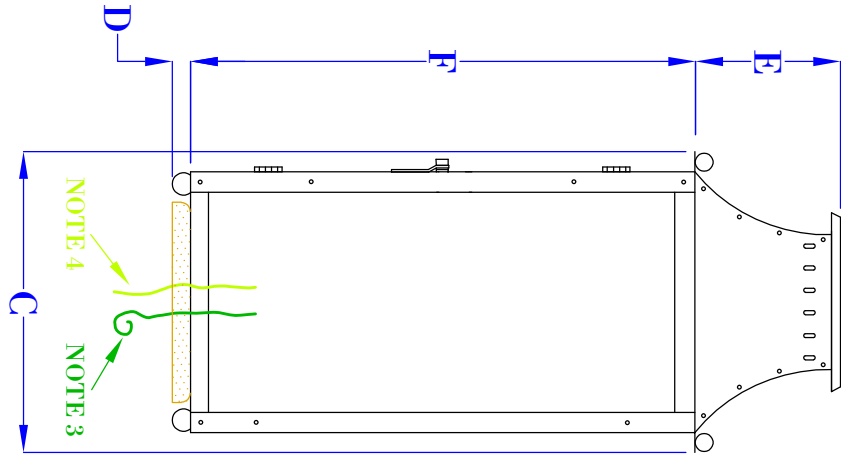
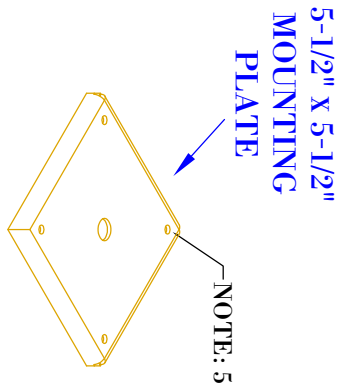


**FRONT VIEW**  
(NTS)



**SIDE VIEW**  
(NTS)



**ISOMETRIC VIEW**  
(NTS- BRACKET ONLY)

- NOTES:**
1. MOUNTING HARDWARE SUPPLIED BY OTHERS
  2. FIXTURES ARE HANDCRAFTED. DIMENSIONS MAY VARY PLUS OR MINUS  $\frac{1}{4}$ "
  3. ELECTRIC LIGHTS SUPPLIED WITH 18/2 WIRE WITH GROUND
  4. GAS LIGHTS SUPPLIED WITH  $\frac{3}{16}$ " COPPER GAS LINE AND  $\frac{3}{16}$ " x  $\frac{1}{4}$ " GAS LINE ADAPTOR
  5. FIXTURE IS SECURED TO COLUMN BY INSTALLING MOUNTING HARDWARE FROM INSIDE OF LIGHT, THROUGH BASE OF FIXTURE AND CORRESPONDING HOLES IN BRACKET.

# BEVOLO GAS & ELECTRIC LIGHTS

**LIGHT:** WILLIAMSBURG 12", 18"

**BRACKET:** LOW PROFILE COLUMN MOUNT

<b>SIZE:</b>	<b>12"</b>	<b>18"</b>
<b>A:</b>	12 $\frac{5}{8}$ "	18 $\frac{5}{8}$ "
<b>B:</b>	8 $\frac{3}{4}$ "	8 $\frac{3}{4}$ "
<b>C:</b>	9 $\frac{1}{2}$ "	9 $\frac{1}{2}$ "
<b>D:</b>	1"	$\frac{1}{2}$ "
<b>E:</b>	3 $\frac{1}{4}$ "	3 $\frac{1}{4}$ "
<b>F:</b>	8 $\frac{7}{8}$ "	14 $\frac{7}{8}$ "

<b>DATE:</b>	<b>DRW BY:</b>	<b>JJG</b>
11-13-20	<b>APP. BY:</b>	<b>JJG</b>
	<b>REVISION:</b>	<b>1</b>

COPYRIGHT 2020, BEVOLO GAS & ELECTRIC LIGHTS. DRAWINGS & DESIGNS ARE OWNED BY BEVOLO AND REMAIN THE SOLE AND EXCLUSIVE PROPERTY OF BEVOLO GAS & ELECTRIC LIGHTS. DRAWINGS AND DESIGNS SHALL NOT BE DUPLICATED IN WHOLE OR PART.