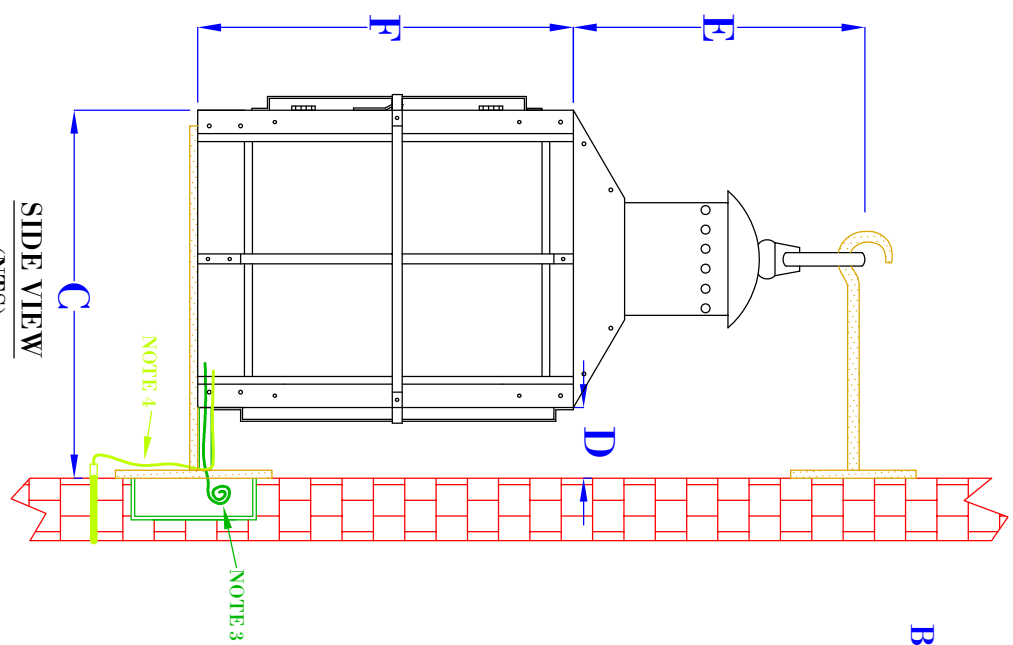


NOTES:

1. MOUNTING HARDWARE SUPPLIED BY OTHERS
2. FIXTURES ARE HANDCRAFTED. DIMENSIONS MAY VARY PLUS OR MINUS $\frac{1}{4}$ "
3. ELECTRIC LIGHTS SUPPLIED WITH 18/2 WIRE WITH GROUND
4. GAS LIGHTS SUPPLIED WITH $\frac{3}{16}$ " COPPER GAS LINE AND $\frac{3}{8}$ " x $\frac{1}{4}$ " GAS LINE ADAPTOR

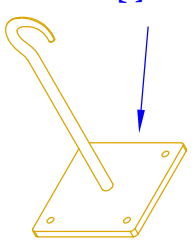
FRONT VIEW
(NTS)



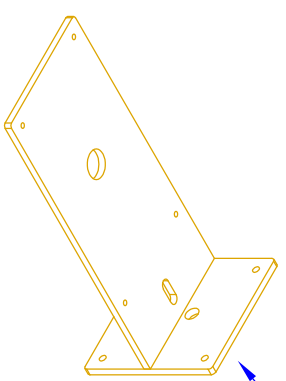
SIDE VIEW
(NTS)

NOTE 3
NOTE 4

5" X 5"
BACK PLATE



5" X 5"
BACK PLATE



ISOMETRIC VIEW
(NTS-BRACKET ONLY)

SIZE:	15"	18"	24"
A:	18 $\frac{3}{8}$ "	21 $\frac{3}{8}$ "	27 $\frac{3}{8}$ "
B:	9 $\frac{1}{2}$ "	9 $\frac{1}{2}$ "	9 $\frac{1}{2}$ "
C:	11 $\frac{5}{8}$ "	11 $\frac{5}{8}$ "	11 $\frac{5}{8}$ "
D:	2 $\frac{1}{8}$ "	2 $\frac{1}{8}$ "	2 $\frac{1}{8}$ "
E:	9 $\frac{3}{8}$ "	9 $\frac{3}{8}$ "	9 $\frac{3}{8}$ "
F:	9"	12"	18"

BEVOLO GAS & ELECTRIC LIGHTS

LIGHT:

NAUTICAL

BRACKET:

STANDARD WALL MOUNT

DRW BY: JJG

DATE: APP. BY: JJG

12-9-20 REVISION: 5

COPYRIGHT 2020, BEVOLO GAS & ELECTRIC LIGHTS. DRAWINGS & DESIGNS ARE OWNED BY BEVOLO AND REMAIN THE SOLE AND EXCLUSIVE PROPERTY OF BEVOLO GAS & ELECTRIC LIGHTS. DRAWINGS AND DESIGNS SHALL NOT BE DUPLICATED IN WHOLE OR PART.