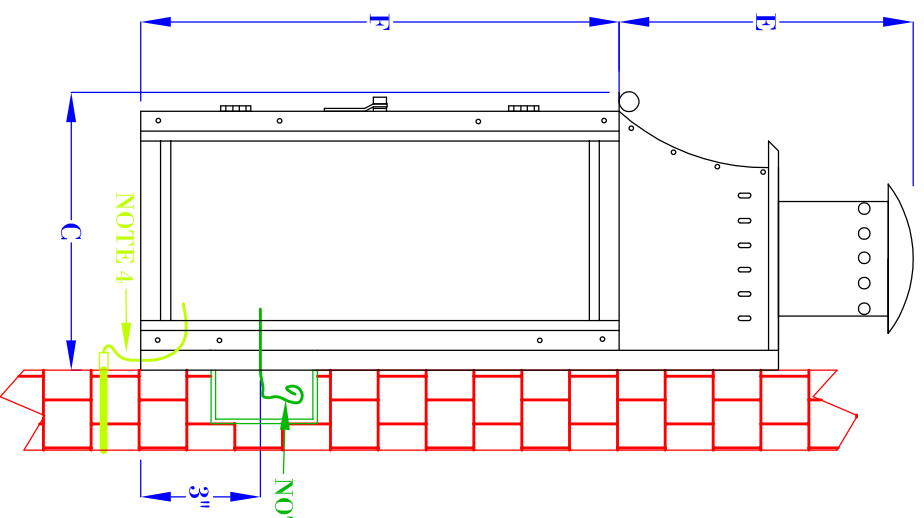


FRONT VIEW
(NTS)



SIDE VIEW
(NTS)

**FLUSH MOUNTED
GAS FIXTURES
CANNOT BE MOUNTED TO
ANY COMBUSTIBLE
MATERIALS INCLUDING
WOOD, VINYL, PVC
OR COMPOSITES**

- NOTES:**
1. MOUNTING HARDWARE SUPPLIED BY OTHERS
 2. FIXTURES ARE HANDCRAFTED. DIMENSIONS MAY VARY PLUS OR MINUS $\frac{1}{4}$ "
 3. ELECTRIC LIGHTS SUPPLIED WITH 18/2 WIRE WITH GROUND
 4. GAS LIGHTS SUPPLIED WITH $\frac{3}{16}$ " COPPER GAS LINE AND $\frac{3}{16}$ " X $\frac{1}{4}$ " GAS LINE ADAPTOR

BEVOLO GAS & ELECTRIC LIGHTS

LIGHT:	WILLIAMSBURG W/ STACK 14", 16", 22"	DATE:	9-10-19	DRW BY:	JJG
BRACKET:	FLUSH MOUNT	APP. BY:		REVISION:	4

SIZE:	14"	16"	22"
A:	$17 \frac{1}{2}$ "	$19 \frac{1}{2}$ "	$25 \frac{1}{2}$ "
B:	$10 \frac{1}{8}$ "	$10 \frac{1}{8}$ "	$10 \frac{1}{8}$ "
C:	$7 \frac{1}{4}$ "	$7 \frac{1}{4}$ "	$7 \frac{1}{4}$ "
E:	$7 \frac{3}{8}$ "	$7 \frac{3}{8}$ "	$7 \frac{3}{8}$ "
F:	$10 \frac{1}{8}$ "	$12 \frac{1}{8}$ "	$18 \frac{1}{8}$ "

COPYRIGHT 2019, BEVOLO GAS & ELECTRIC LIGHTS. DRAWINGS & DESIGNS ARE OWNED BY BEVOLO AND REMAIN THE SOLE AND EXCLUSIVE PROPERTY OF BEVOLO GAS & ELECTRIC LIGHTS. DRAWINGS AND DESIGNS SHALL NOT BE DUPLICATED IN WHOLE OR PART.