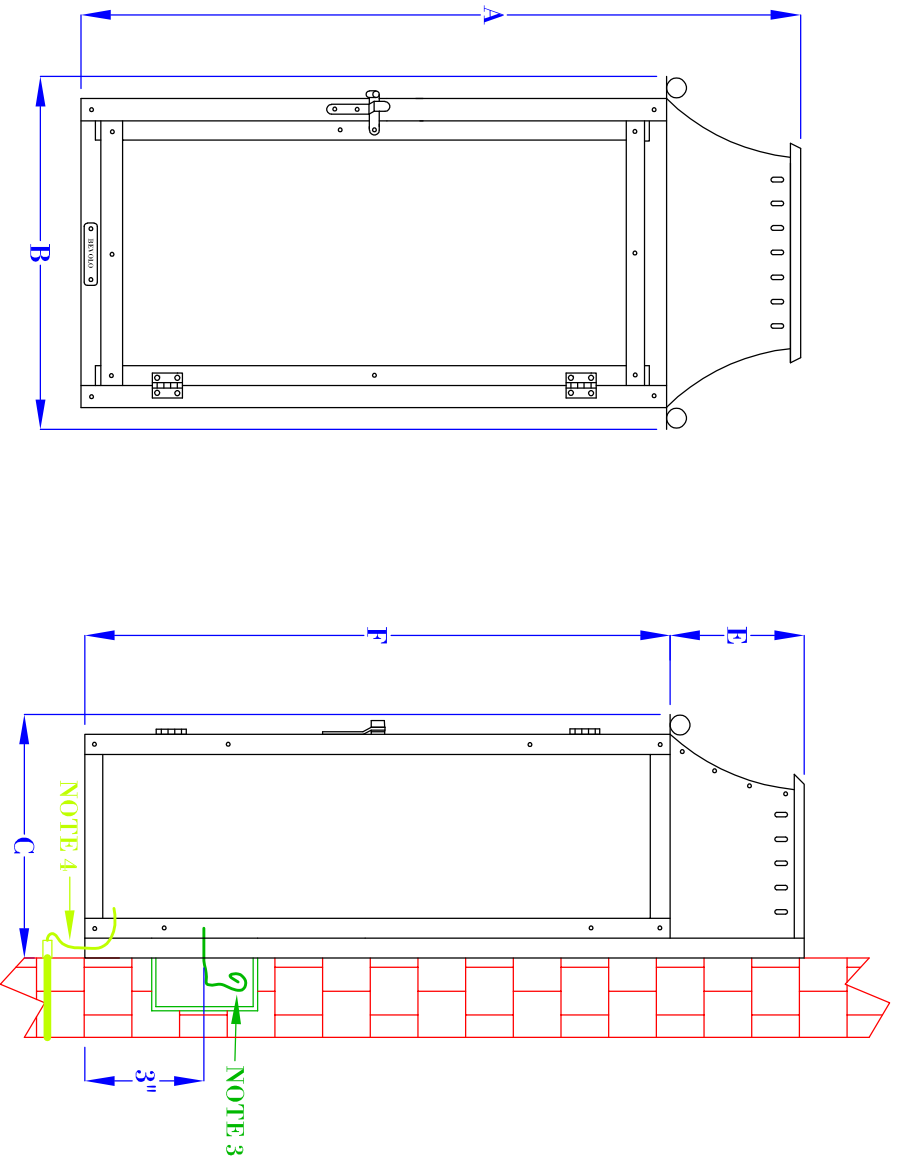


**FLUSH MOUNTED  
GAS FIXTURES  
CANNOT BE MOUNTED TO  
ANY COMBUSTIBLE  
MATERIALS INCLUDING  
WOOD, VINYL, PVC  
OR COMPOSITES**



**FRONT VIEW**

(NTS)

**SIDE VIEW**

(NTS)

**NOTES:**

1. MOUNTING HARDWARE SUPPLIED BY OTHERS
  2. FIXTURES ARE HANDCRAFTED. DIMENSIONS MAY VARY PLUS OR MINUS  $\frac{1}{4}$ "
  3. ELECTRIC LIGHTS SUPPLIED WITH 18/2 WIRE WITH GROUND
  4. GAS LIGHTS SUPPLIED WITH  $\frac{3}{16}$ " COPPER GAS LINE AND  $\frac{3}{16}$ " X  $\frac{1}{4}$ " GAS LINE ADAPTOR
- PLEASE NOTE: 10", 12", 15" FLUSH MOUNT SIZES ARE NOT SOLD IN GAS.**

# BEVOLO GAS & ELECTRIC LIGHTS

**LIGHT:**

**WILLIAMSBURG 10", 12", 15", 18"**

**BRACKET:**

**FLUSH MOUNT**

<b>SIZE:</b>	10"	12"	15"	18"
A:	10 $\frac{1}{8}$ "	12 $\frac{1}{8}$ "	15 $\frac{1}{8}$ "	18 $\frac{1}{8}$ "
B:	7 $\frac{1}{4}$ "	8 $\frac{3}{4}$ "	7 $\frac{1}{4}$ "	8 $\frac{3}{4}$ "
C:	5 $\frac{1}{4}$ "	6"	5 $\frac{1}{4}$ "	6"
E:	3 $\frac{1}{4}$ "	3 $\frac{1}{4}$ "	3 $\frac{1}{4}$ "	3 $\frac{1}{4}$ "
F:	6 $\frac{7}{8}$ "	8 $\frac{7}{8}$ "	11 $\frac{7}{8}$ "	14 $\frac{7}{8}$ "

<b>DATE:</b>	<b>DRW BY:</b>
9-10-19	JJG
<b>REVISION:</b>	<b>APP. BY:</b>
3	JJG

COPYRIGHT 2019, BEVOLO GAS & ELECTRIC LIGHTS. DRAWINGS & DESIGNS ARE OWNED BY BEVOLO AND REMAIN THE SOLE AND EXCLUSIVE PROPERTY OF BEVOLO GAS & ELECTRIC LIGHTS. DRAWINGS AND DESIGNS SHALL NOT BE DUPLICATED IN WHOLE OR PART.