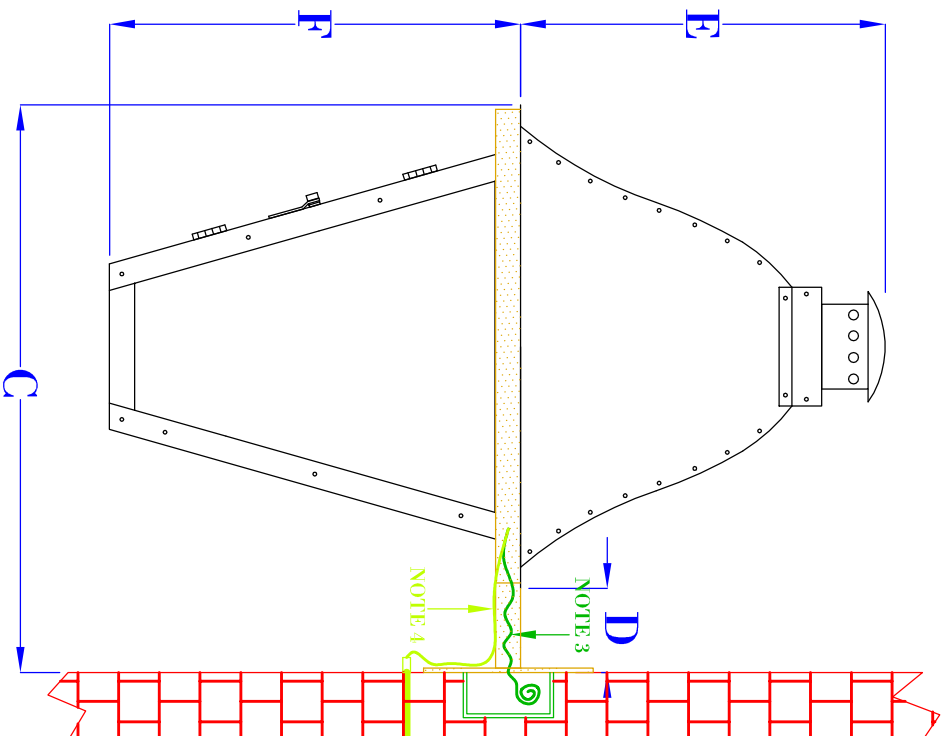
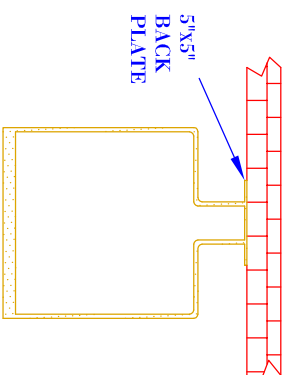


FRONT VIEW
(NTS)



SIDE VIEW
(NTS)



TOP VIEW

(NTS-BRACKET ONLY)

- NOTES:**
1. MOUNTING HARDWARE SUPPLIED BY OTHERS
 2. FIXTURES ARE HANDCRAFTED. DIMENSIONS MAY VARY PLUS OR MINUS $\frac{1}{4}$ "
 3. ELECTRIC LIGHTS SUPPLIED WITH 18/2 WIRE WITH GROUND
 4. GAS LIGHTS SUPPLIED WITH $\frac{3}{16}$ " COPPER GAS LINE AND $\frac{3}{16}$ " x $\frac{1}{4}$ " GAS LINE ADAPTOR

BEVOLO GAS & ELECTRIC LIGHTS

LIGHT:

PROVENCE

DATE:

DRW BY:

JJG

BRACKET:

FRENCH QUARTER

4-28-16

APP. BY:

REVISION:

1

SIZE:	21"	24"
A:	20 $\frac{1}{8}$ "	23 $\frac{1}{8}$ "
B:	12 $\frac{1}{2}$ "	14 $\frac{1}{4}$ "
C:	15"	16 $\frac{3}{4}$ "
D:	2 $\frac{1}{2}$ "	2 $\frac{1}{2}$ "
E:	9 $\frac{7}{8}$ "	11"
F:	10 $\frac{1}{4}$ "	12 $\frac{1}{8}$ "

COPYRIGHT 2016, BEVOLO GAS & ELECTRIC LIGHTS. DRAWINGS & DESIGNS ARE OWNED BY BEVOLO AND REMAIN THE SOLE AND EXCLUSIVE PROPERTY OF BEVOLO GAS & ELECTRIC LIGHTS. DRAWINGS AND DESIGNS SHALL NOT BE DUPLICATED IN WHOLE OR PART.