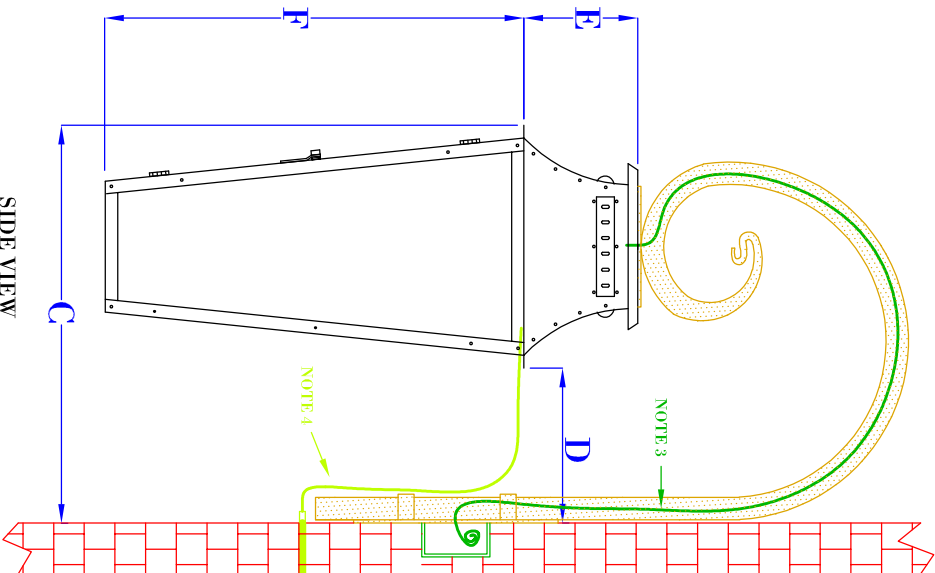
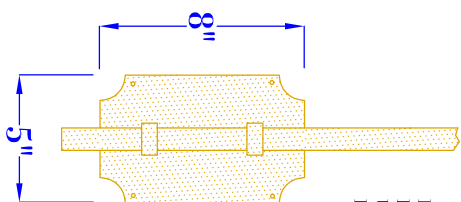


FRONT VIEW
(NTS)



SIDE VIEW
(NTS)



BACKPLATE DETAIL
(NTS)

NOTE: 33"
ITALIANATE
USES 5"W X 12"H
BACK PLATE

- NOTES:
1. MOUNTING HARDWARE SUPPLIED BY OTHERS
 2. FIXTURES ARE HANDCRAFTED. DIMENSIONS MAY VARY PLUS OR MINUS $\frac{1}{4}$ "
 3. ELECTRIC LIGHTS SUPPLIED WITH 18/2 WIRE WITH GROUND. ELECTRIC WIRE RUNS INSIDE OF THE BRACKET.
 4. GAS LIGHTS SUPPLIED WITH $\frac{3}{16}$ " COPPER GAS LINE AND $\frac{3}{16}$ " x $\frac{1}{4}$ " GAS LINE ADAPTOR

BEVOLO GAS & ELECTRIC LIGHTS

LIGHT:

ITALIANATE

DATE:

DRW BY:

JJG

BRACKET:

STANDARD WALL MOUNT

12-3-15

APP. BY:

MAJ

8

SIZE:	20"	27"	33"
A:	30"	37 $\frac{1}{4}$ "	47 $\frac{5}{8}$ "
B:	9 $\frac{5}{8}$ "	12 $\frac{3}{8}$ "	15 $\frac{1}{4}$ "
C:	15 $\frac{1}{2}$ "	17 $\frac{1}{8}$ "	19"
D:	5 $\frac{7}{8}$ "	4 $\frac{3}{4}$ "	3 $\frac{3}{4}$ "
E:	4 $\frac{1}{2}$ "	6 $\frac{3}{8}$ "	7 $\frac{1}{4}$ "
F:	15 $\frac{1}{2}$ "	20 $\frac{3}{8}$ "	25 $\frac{3}{8}$ "

COPYRIGHT 2011, BEVOLO GAS & ELECTRIC LIGHTS.
THIS DRAWING AND ANY DESIGN OR DATA
CONTAINED THEREIN ARE CONSIDERED PROPERTY
OF BEVOLO GAS AND ELECTRIC LIGHTS. NEITHER
THE DRAWING NOR ITS CONTENT MAY BE COPIED,
REPRODUCED, OR EDITED TO A LICENSE
WITHOUT THE WRITTEN CONSENT OF BEVOLO GAS
AND ELECTRIC LIGHTS.