

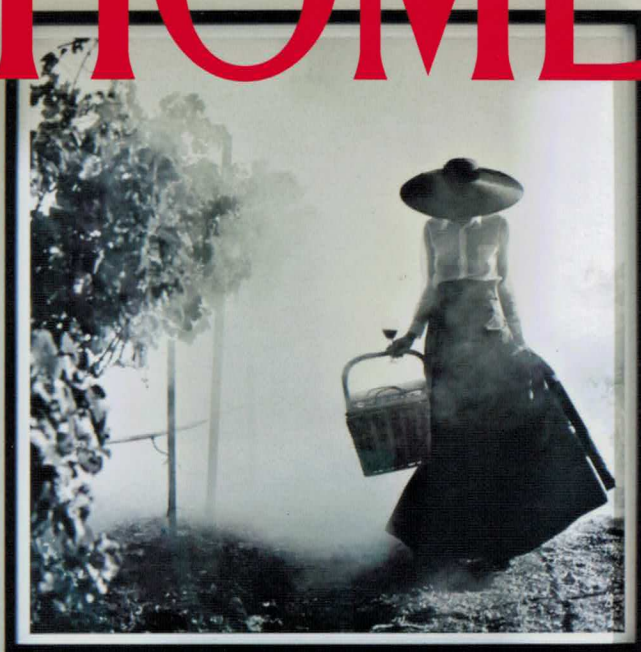
DESIGNER SECRETS FROM NEW YORK TO NASHVILLE TO NAPA

# TRADITIONAL HOME

July/August 2015

**DON'T MISS:**  
CHARLES  
FAUDREE'S  
NORTH  
CAROLINA  
LEGACY  
p104

**+** 15 TIPS TO  
MAKE YOUR  
KITCHEN  
INVITING



Best of  
**Showhouse**

**52** DECORATING  
PROS SHARE THEIR  
TRIED-AND-TRUE  
SHOWHOUSE IDEAS



Photo: Ryann Ford

## A HISTORY OF *innovation*

### BEVOLO GAS & ELECTRIC LIGHTS HONORS THE PAST AND DESIGNS FOR THE FUTURE

**T**his year marks the 70th anniversary for family-owned Bevolo Gas & Electric Lights. From its beginnings in New Orleans' French Quarter in 1945 to the design resource it is today, the company has always merged time-honored craftsmanship with forward-thinking innovation.

When Andrew Bevolo, Sr., began Bevolo Metal Crafts seven decades ago, he revolutionized the production of gas lamps by utilizing a hand-riveting technique borrowed from the automobile and aircraft industries—giving the fixtures incredible strength and durability. They were also beautiful: One of his early designs, the Original French Quarter Lamp, is still in the line today.

Now known as Bevolo Gas & Electric Lights, the company has married the old-world style of gas lamps with the newest LED bulb and natural-gas burner technologies. Yet each piece is still produced locally by hand, drawing on the expertise of skilled craftsmen and coppersmiths, to become what owner Drew Bevolo likes to call “jewelry for the home.”

Don't mistake these fixtures for simple accessories, though. Design inspiration comes from architecture around the world—from Classic to Mid-Century Modern—and each lamp is customized to become integral to its home. Says Bevolo, “The idea comes from a vision of what is right for the house or building, its use, its purpose—in the past and how it will be repurposed into the future.”

The company achieves this vision by asking every customer to send photos or architectural plans of their home. Bevolo then uses its expertise to make scale and style recommendations before production of the lighting begins.

Such artisanship is just one of the reasons the company has endured throughout the decades. It is also why the lights themselves endure; Bevolo lanterns are lifetime fixtures that only increase in beauty as the copper ages.

**Discover all of Bevolo Gas & Electric Lights' designs at [Bevolo.com](http://Bevolo.com)**



“Bevolo lanterns are lifetime fixtures that only increase in beauty as the copper ages.”



# THE SOURCE

Like what you saw in Traditional Home this month? Here's your chance to learn more! Request product information and learn more about the featured brands and products using one of the following methods:

- Return the coupon on this page
- Visit [traditionalhome.com/source](http://traditionalhome.com/source)

You'll receive exclusive advertiser information and be on your way to designing the home of your dreams.



## AZEK DECK'S VINTAGE COLLECTION

A game-changer in capped pvc decking, AZEK Deck's Vintage Collection (in Mahogany, Cypress and Dark Hickory) looks like freshly stained wood, but without the need for applying stain. With natural, classic looks inspired by nature, the low-maintenance Vintage Collection must be seen to be appreciated.  
[www.azek.com](http://www.azek.com)

1



## BENJAMIN MOORE

Mother Nature doesn't stand a chance against Aura Exterior. It's specially designed to be hard on the surface to withstand the elements and resist fading, while being flexible underneath to protect against cracking and peeling. And thanks to our exclusive Color Lock® technology and our lifetime guarantee, the color will look like new season after season. Benjamin Moore. Paint like no other. To find an authorized retailer near you go to [benjaminmoore.com](http://benjaminmoore.com).

2



## BERNHARDT

For more than 125 years, the Bernhardt brand has been synonymous with fashionable, well-made furniture. Classic pieces, enlivened by modern embellishment and light. Details like sculptured brass, quilted leather wraps, bracelet hardware, gold leaf finishes, and dramatic woods. A fashion wardrobe for expressing modern glamour. Visit [bernhardt.com](http://bernhardt.com)

3



## BEVOLTO GAS AND ELECTRIC LIGHTS

Bevolto's Modernist is the newest to the collection. Define a contemporary space with this streamlined, rectangular style that complements a multitude of architectural styles. Available in stainless steel or antique copper; gas or electric. [www.bevolto.com](http://www.bevolto.com)

4



## BILTMORE®

Biltmore, an original American treasure, has been a legacy of quality, craftsmanship, and elegance since 1895. Make your home a welcoming retreat with our home furnishings and bedding collections. Discover us at [biltmore.com/traditionalhome](http://biltmore.com/traditionalhome)

5



## CAESARSTONE

Caesarstone premium quality quartz surface is innovative, highly functional and design forward. Consisting of 93% quartz, its three diverse collections—Classico, Motivo and Conetto retain cool tactile qualities of nature's stones. Applications include kitchen countertops, vanities, flooring, walls and furniture. [www.caesarstoneus.com](http://www.caesarstoneus.com)

6

## THE SOURCE

If your items are free, detach and mail this coupon. If there are charges for your items, mail coupon and check or money order in U.S. dollars only to: Inquiry Management Systems, Inc., P.O.Box 5132, Buffalo, NY 14205-5132

### Order By Mail:

- Circle your choices • Complete Information below
- Expired coupons will not be processed • Expiration date: 12/23/2015
- Key Code: Dept TH08151L

### TO SUBSCRIBE TO TRADITIONAL HOME:

Circle No. 24 (1 Year U.S. \$24.00.) Outside U.S. Circle No. 25 (1 year \$34.00.)

1	Free	10	Free	19	Free
2	Free	11	Free	20	Free
3	Free	12	Free	21	Free
4	Free	13	Free	22	Free
5	Free	14	Free	23	Free
6	Free	15	Free	24	Bill me
7	Free	16	Free	25	Bill me
8	Free	17	Free		
9	Free	18	Free		

I AM ENCLOSING: \$ \_\_\_\_\_ TOTAL ENCLOSED \_\_\_\_\_

Are you planning to complete the following and if so, in which time frame? (circle all that apply)

Build:	0-3	3-6	6+ months
Remodel:	0-3	3-6	6+ months
Decorate:	0-3	3-6	6+ months
Add a room:	0-3	3-6	6+ months
Move:	0-3	3-6	6+ months

NAME \_\_\_\_\_

ADDRESS \_\_\_\_\_

CITY \_\_\_\_\_ STATE \_\_\_\_\_ ZIP \_\_\_\_\_

PHONE NO. \_\_\_\_\_

(OPTIONAL) E-MAIL ADDRESS \_\_\_\_\_

We will share your e-mail address with the advertisers from which you request information



## CIRCA LIGHTING

Simply Brilliant Lighting. At Circa Lighting, our priority is to provide an outstanding experience. Whether through our sales and customer service center or one of our boutique lighting showrooms, you will have access to experts to consult with in choosing the products best suited to your needs. Our refreshing approach makes your search for lighting simple and the results brilliant. View our lighting collection online at [circalighting.com](http://circalighting.com)

7



## CLOPAY®

Imagine Your Home Reinvented—Uncover the beauty of your home with a stylish Clopay garage door. With so many distinctive choices, you can rejuvenate your home with a dramatic entrance that makes a bold statement. To explore the possibilities and discover your style, visit [www.imagine.clopay.com](http://www.imagine.clopay.com)

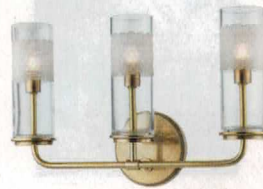
8



## CROSSVILLE

Discover beautiful, sustainable design for your home with infinitely inspiring tile solutions from Crossville. Our exclusive Porcelain Stone collections lend style and substance to distinctive spaces everywhere. [www.crossvilleinc.com](http://www.crossvilleinc.com)

9



## HUDSON VALLEY LIGHTING

Hudson Valley Lighting® creates unique and original designs, spanning in style from historic to artisan, transitional to contemporary. From pendants to chandeliers, sconces to flush mounts—Hudson Valley Lighting's impressive range of designs assures endless high quality options. For more information, visit: [www.hudsonvalleylighting.com](http://www.hudsonvalleylighting.com)

10



## HUNTER DOUGLAS WINDOW FASHIONS

At Hunter Douglas, we see form and function as inseparable. Our innovative window fashion designs are beautiful to live with, provide variable light control, help insulate rooms from heat and cold, protect furnishings from damaging UV rays, and even absorb sound. Now that's artful window dressing.

11



## KILZ®

When it comes to painting, proper preparation is key to achieve the best results. Whether your project involves minimal decorative painting or tackling a tough problem, we have the right primer to finish any size job the right way. Visit [kilz.com](http://kilz.com) for product tips and how-to instructions. KILZ® Get Started.

12